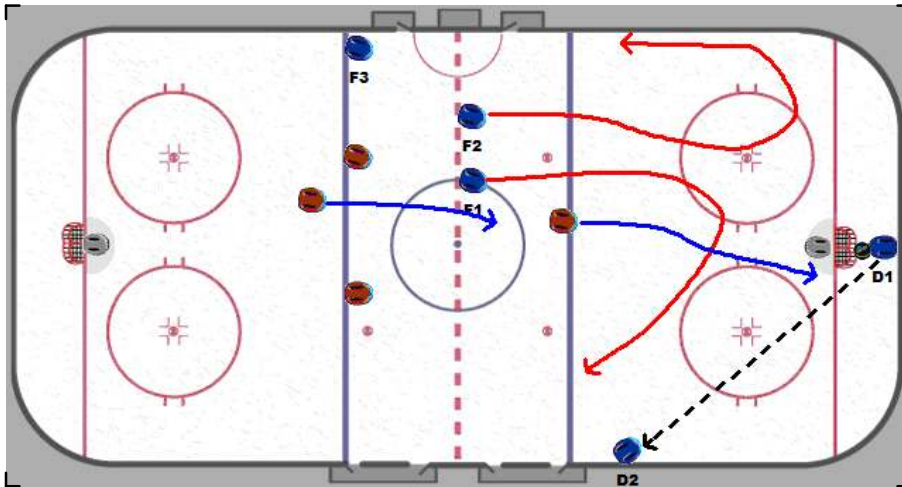


Nielsen_Playbook

Power Play Breakout



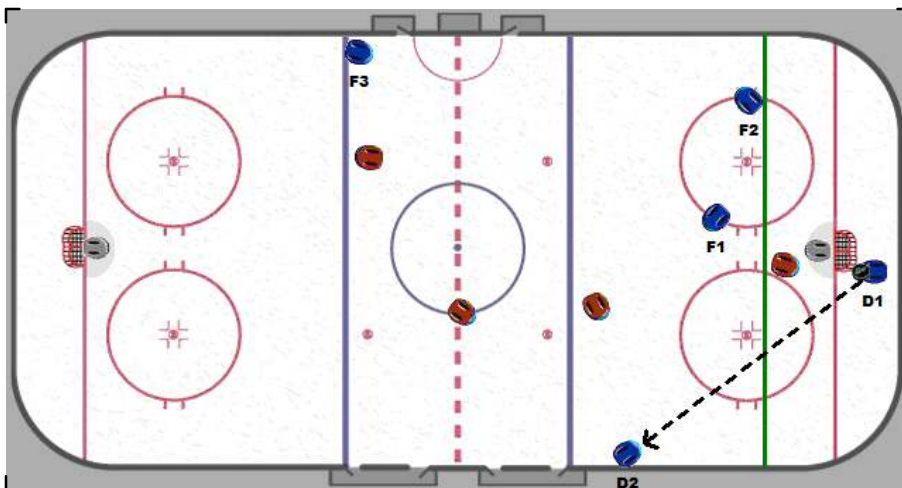
This breakout will allow us to create odd man situations all the way down the ice if performed properly.

D1 goes behind the net to get the puck

D2 goes to the LEFT side boards above the circle and below the blue line.

F3 holds at the wall of the offensive blue line

F1 & F2 come back to receive passes off the breakout.

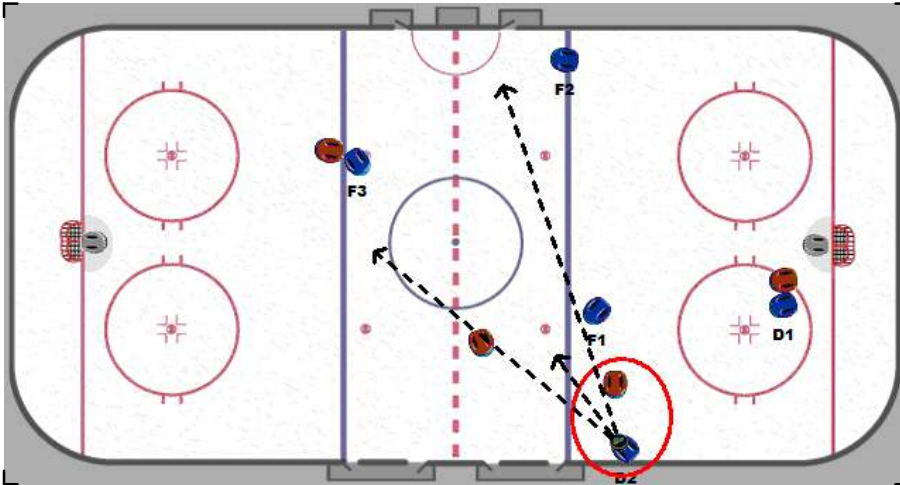


D1 waits for the opponent to get close to him before he makes the outlet pass to D2.

By waiting we create a 4 on 3 situation up the ice because their first forechecker is caught deep.

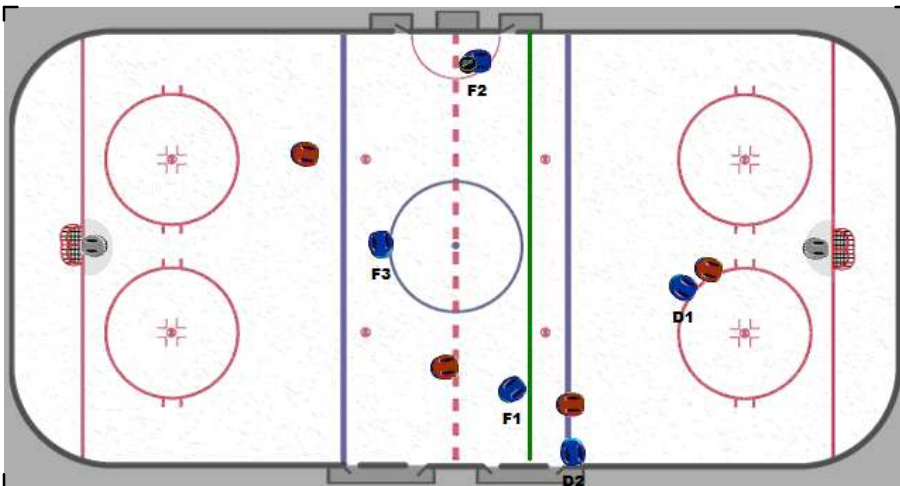
Nielsen_Playbook

Power Play Breakout



D2 accepts the pass along the wall. When the opponents second forechecker comes to D2 to force the play, D2 has three options for a pass.

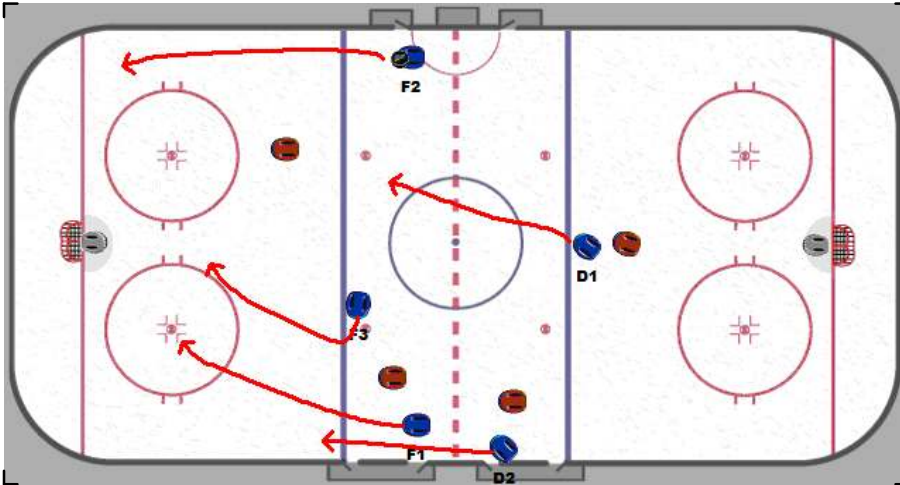
- 1 - Easy pass to F1 cutting to the wall
- 2 - Cross ice to F2
- 3 - Up ice to F3 if the defense doesn't watch him.



When the second forechecker came to D2 it creates a 3 on 2 up ice if we skate hard.

Nielsen_Playbook

Power Play Breakout



We enter the offensive zone with speed creating a 3 on 2 down low. If a quick pass to the middle isn't open we regroup and set up in our normal power play positioning.