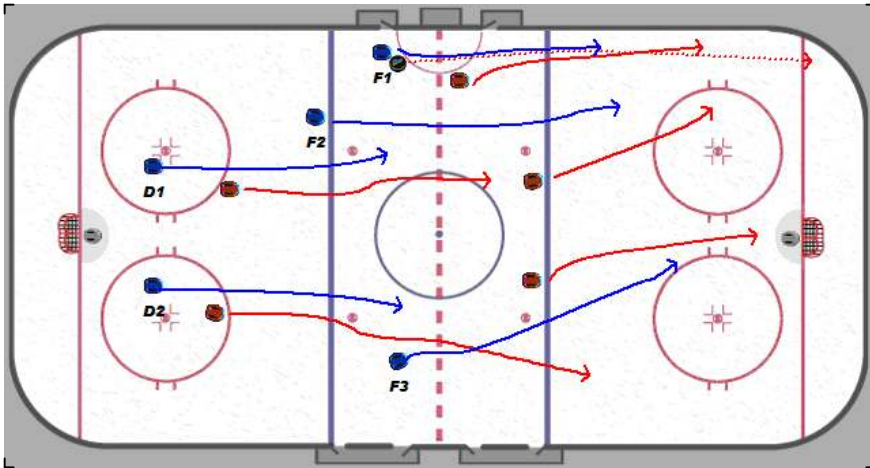
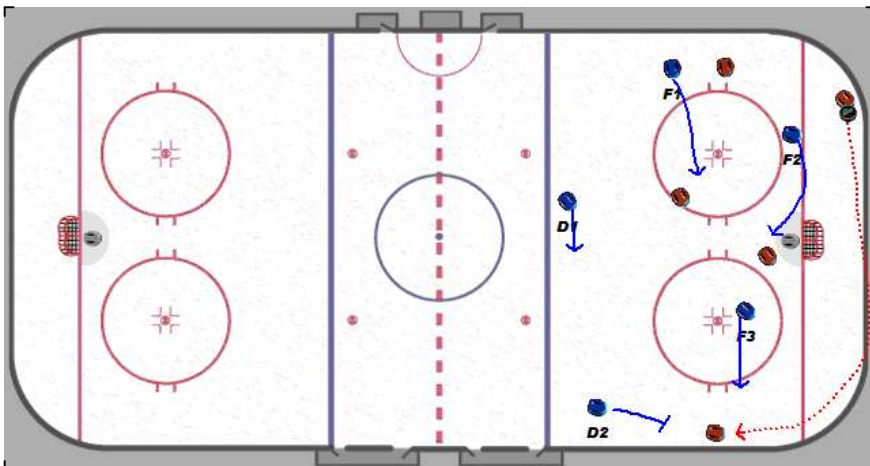


Nielsen_Playbook

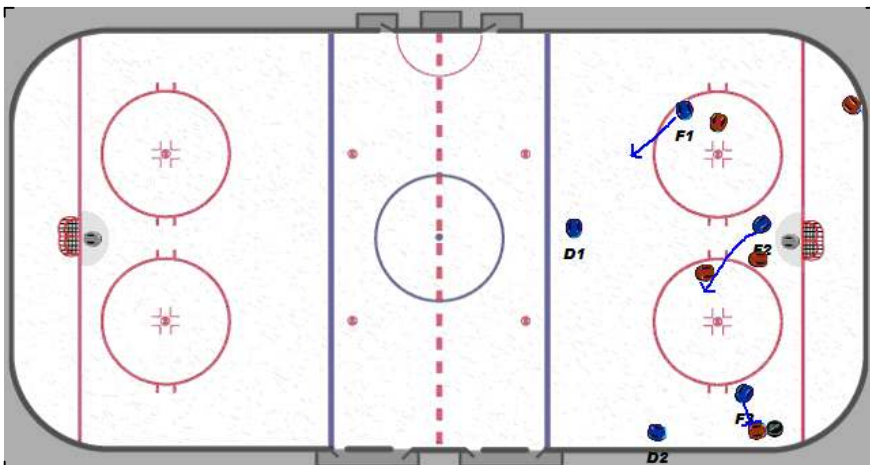
1-2-2 Offensive Zone Rim



We dump the puck a pressure in the standard 1-2-2 forecheck positions.



F3 must read the rim pass and adjust his attack angle to get to the weakside wall and defend the wing.
F1 & F2 adjust their attack pattern to come to the middle of the ice.
D2 can pinch in to pressure the wing on the wall and D1 moves to the middle of the ice to protect if the puck gets behind D2.



After the forward receives the pass we must be on top of him right away. F3 takes the body and D2 picks up loose pucks. If F3 can't put a body on him we need to make sure our stick is in the passing lanes to block potential passes.
F2 has to come back hard through the middle to take away the middle of the ice.
F1 has to protect the backside.