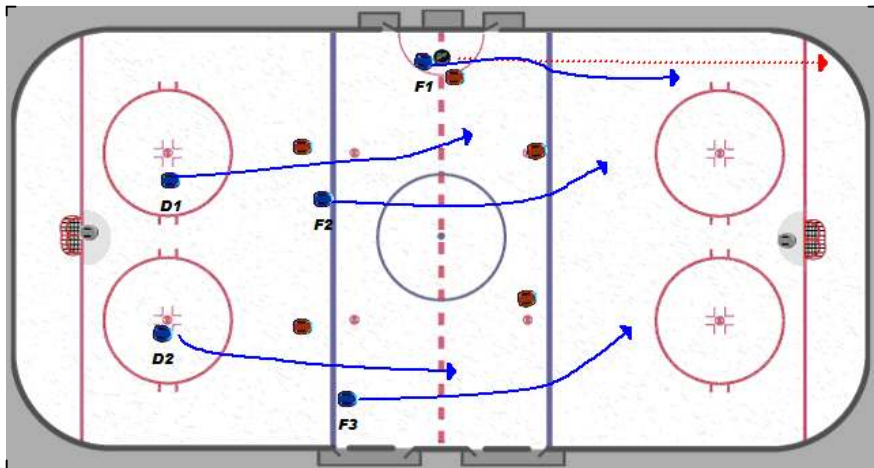
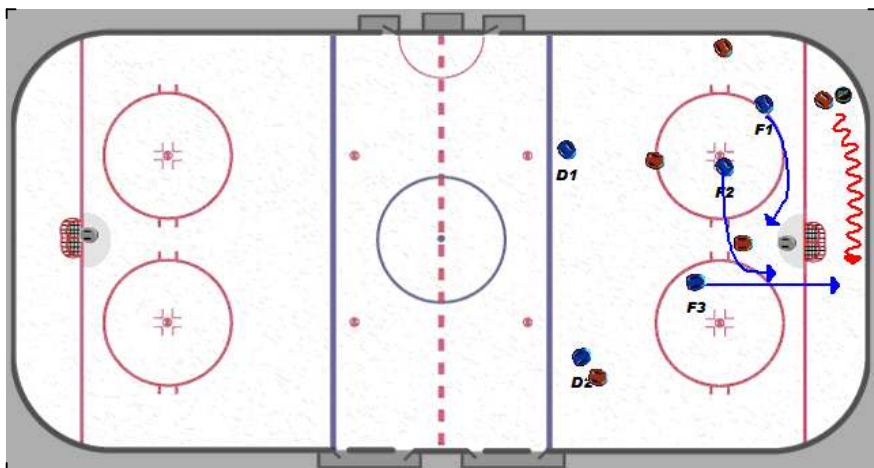


# Nielsen\_Playbook

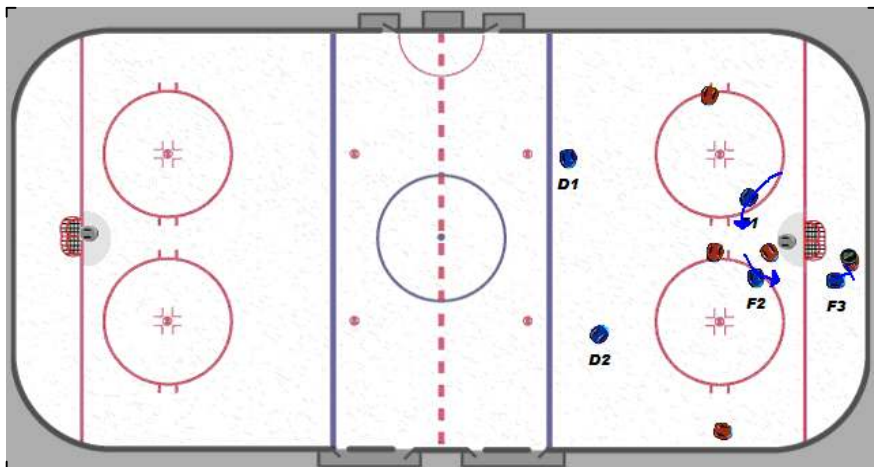
## 1-2-2 Offensive Zone Forecheck D Carry



Under pressure dump the puck into the corner.



If we can't get to the defenseman to pressure him and he skates with the puck behind the net, F3 needs to read that developing situation and move to the weakside to meet the defenseman carrying the puck. F1 and F2 should move with the skating defenseman.



F3 should try to take the body of the skating defenseman and create a turnover. F2 & F1 should be in the middle of the ice to look for a turnover. D2 can't pinch too deep. D1 watches the middle of the ice high.